



(<https://www.26northyachts.com>)

**Will Snyder**

26 North Yachts

1-954-235-3468 (tel: 1-954-235-3468)

[will@26northyachts.com](mailto:will@26northyachts.com)

(mailto:will@26northyachts.com)



## 2010 Fairline 74' (22.56m) Squadron - *Direct To*

\*\*\*See "Direct To" at the  
Palm Beach Boat Show (Palm  
Harbor, Slip D212)\*\*\*

\$  
**1,495,000**  
USD  
€ 1,362,486  
Euros  
\$ 1,914,447  
CAD  
£ 1,144,108  
GBP

Lighthouse Point Florida United States

Motor Yachts

Power


Used

Diesel

Fiberglass Hull

HIN/IMO: FLN11908E910

Vessel ID# 2787263    Last Updated: 2022-03-15  
15:41:10

 EMAIL BRO 1-954-235-34

(SMS://1-954-23



(<https://vessel.iyba.pro/for-sale/40000061/?id=82462&vessel=27874-ft-fairline-2010-squadron-direct-to-lighthouse-point-yacht-for-sale&lang=en>)



(<https://vessel.iyba.pro/for-sale/40000061/?id=82462&vessel=27874-ft-fairline-2010-squadron-direct-to-lighthouse-point-yacht-for-sale&lang=es>)



(<https://vessel.iyba.pro/for-sale/40000061/?id=82462&vessel=27874-ft-fairline-2010-squadron-direct-to-lighthouse-point-yacht-for-sale&lang=fr>)

**Contact Us**

## Description

---

The name of this stunning 74' Fairline Squadron, "Direct To", can be interpreted several ways. With her best-in-class fit & finish, remarkable performance characteristics, and phenomenal layout, one can't help but send all phone calls "direct to" voicemail while onboard.

Though perhaps, given this Fairline's turnkey condition - both cosmetic & mechanical - it's inevitable that her new owner will want to take her "direct to" the Bahamas right after the final paperwork is signed. Makes sense to us.

As brokers, we have a slightly different take on her name. As unquestionably the best deal on the market - there's simply nothing comparable within her price range - we anticipate this yacht going "direct to" Soldboats.com right after her star turn at the Palm Beach Boat Show.

### "DIRECT TO" HIGHLIGHTS

- Caterpillar C-32 Engines with Low Hours (1,000 Hour Service Completed)
- Exceptional Performance - 24 Knot Cruise, Topping Out at 33 Knots!
- Extraordinary Four Stateroom Layout with Massive Master Stateroom
- Updates Galore - New Soft Goods, Flexiteek, Watermaker, and Much More!
- Terrific, Turn-Key Condition - She Looks Great & is Fully "Dialed In"
- Twin Cummins Onan Generators (with Low Hours)
- U.S. Spec'd Vessel - 110/220-volt AC 60 Hz Electrical System
- On Display at the Palm Beach International Boat Show
- Best Priced Yacht in Her Class!!!

### "DIRECT TO" UPDATES (Last 18 Months):

- New Flexiteek (Includes Balance of 5 Year Warranty) on Swim Platform, Bow, and Forward Side Decks. This material is Sand-able!
- New Garmin Screens for Upper & Lower Helms
- New SeaWater Pro Watermaker
- Ceramic Coating on Hull & Superstructure (Worth Every Penny!)
- New Pepwave Wifi System Throughout the Yacht
- New Soft Goods in Port & Starboard Guest Staterooms
- New Bimini Top & Flybridge Canvas Covers
- New Bow Sunpad & Canvas Cover
- New Aft Deck Furniture & Sunshade
- Flybridge Table & Cap Rails - Newly Sanded & Varnished!
- New House Batteries (4)
- Props Refurbished & Rebalanced

- New VHF Radio on the Flybridge
- Satellite Domes Have a Fresh Coat of Paint

## Data Sheet

HIN/IMO: FLN11908E910	Crew Cabins: 1	Bow Thruster: Yes
LOA: 74' " (22.56 Meters)	Crew Sleeps: 2	Stern Thruster: Yes
Type: Power - Used	Maximum Speed: 33 Knots	Fuel Tank: 1557 Gallons (5893.88 Liters)
Year: 2010	Cruise Speed: 24 Knots	Fresh Water: 301 Gallons (1139.41 Liters)
Beam: 18' 8"	Fuel Type: Diesel	Holding Tank: 250 Gallons (946.35 Liters)
Draft Max: 5' 3"	Hull Material: Fiberglass	Dry Weight: 101963
Cabins: 4	Hull Shape: Semi Displacement	Builder: Fairline
Sleeps: 8	Air Conditioning: Yes	Exterior Color: White
Twin Berths: 2		
Double Berths: 1		
Queen Berths: 1		
Heads: 3		

## Photos [click to view all](#)



(<https://cdn.yachtbroker.org/images/2787263-yachtbroker.jpg>) (<https://cdn.yachtbroker.org/images/2787263-yachtbroker.jpg>) (<https://cdn.yachtbroker.org/images/2787263-yachtbroker.jpg>)







(https://cdn.yachtbroker.org/images/2787/263/yachtbroker\_0.jpg)



(https://cdn.yachtbroker.org/images/2787/263/yachtbroker\_1.jpg)



(https://cdn.yachtbroker.org/images/2787/263/yachtbroker\_2.jpg)



(https://cdn.yachtbroker.org/images/2787/263/yachtbroker\_3.jpg)



(https://cdn.yachtbroker.org/images/2787/263/yachtbroker\_4.jpg)



(https://cdn.yachtbroker.org/images/2787/263/yachtbroker\_5.jpg)



(https://cdn.yachtbroker.org/images/2787/263/yachtbroker\_6.jpg)



(https://cdn.yachtbroker.org/images/2787/263/yachtbroker\_7.jpg)



(https://cdn.yachtbroker.org/images/2787/263/yachtbroker\_8.jpg)



(https://cdn.yachtbroker.org/images/2787/263/yachtbroker\_9.jpg)



(https://cdn.yachtbroker.org/images/2787/263/yachtbroker\_10.jpg)



(https://cdn.yachtbroker.org/images/2787/263/yachtbroker\_11.jpg)



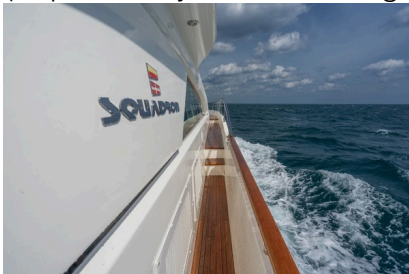
(https://cdn.yachtbroker.org/images/2787/263/yachtbroker\_12.jpg)



(https://cdn.yachtbroker.org/images/2787/263/yachtbroker\_13.jpg)



(https://cdn.yachtbroker.org/images/2787/263/yachtbroker\_14.jpg)



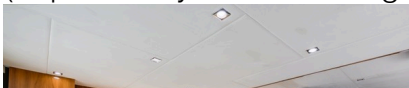
(https://cdn.yachtbroker.org/images/2787/263/yachtbroker\_15.jpg)



(https://cdn.yachtbroker.org/images/2787/263/yachtbroker\_16.jpg)



(https://cdn.yachtbroker.org/images/2787/263/yachtbroker\_17.jpg)



(https://cdn.yachtbroker.org/images/2787/263/yachtbroker\_18.jpg)



(https://cdn.yachtbroker.org/images/2787/263/yachtbroker\_19.jpg)

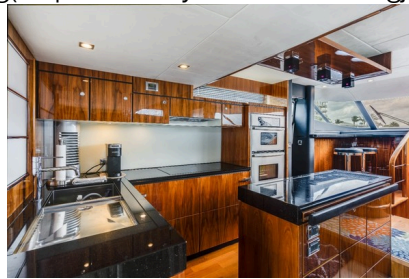


(https://cdn.yachtbroker.org/images/2787/263/yachtbroker\_20.jpg)

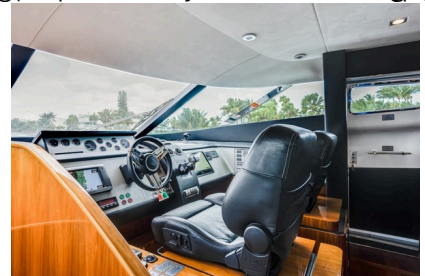
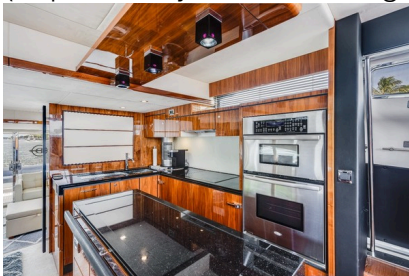




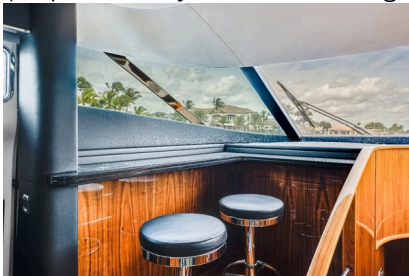
([https://cdn.yachtbroker.org/images/2387263-yachtbroker\\_01.jpg](https://cdn.yachtbroker.org/images/2387263-yachtbroker_01.jpg))



([https://cdn.yachtbroker.org/images/2387263-yachtbroker\\_02.jpg](https://cdn.yachtbroker.org/images/2387263-yachtbroker_02.jpg))



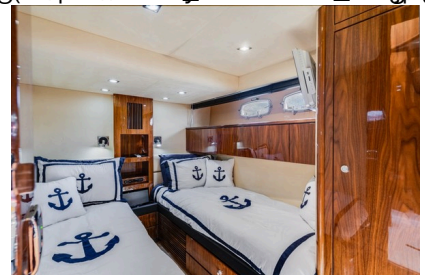
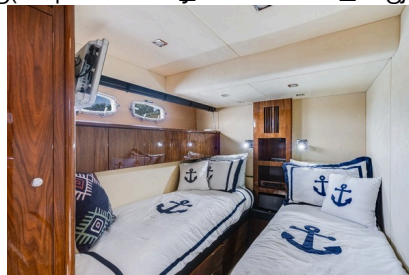
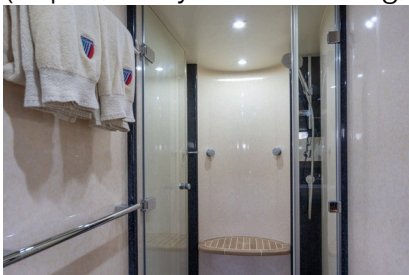
([https://cdn.yachtbroker.org/images/2387263-yachtbroker\\_03.jpg](https://cdn.yachtbroker.org/images/2387263-yachtbroker_03.jpg))



([https://cdn.yachtbroker.org/images/2387263-yachtbroker\\_04.jpg](https://cdn.yachtbroker.org/images/2387263-yachtbroker_04.jpg))



([https://cdn.yachtbroker.org/images/2387263-yachtbroker\\_05.jpg](https://cdn.yachtbroker.org/images/2387263-yachtbroker_05.jpg))



([https://cdn.yachtbroker.org/images/2387263-yachtbroker\\_06.jpg](https://cdn.yachtbroker.org/images/2387263-yachtbroker_06.jpg))







(https://cdn.yachtbroker.org/images/12387263-yachtbroker-39.jpg) (https://cdn.yachtbroker.org/images/12387263-yachtbroker-40.jpg)



(https://cdn.yachtbroker.org/images/12387263-yachtbroker-42.jpg) (https://cdn.yachtbroker.org/images/12387263-yachtbroker-43.jpg)



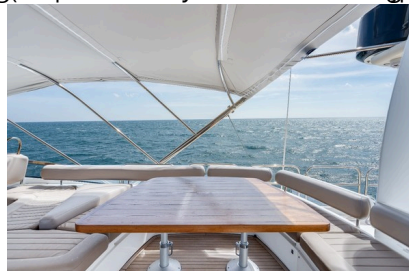
(https://cdn.yachtbroker.org/images/12387263-yachtbroker-45.jpg) (https://cdn.yachtbroker.org/images/12387263-yachtbroker-46.jpg)



(https://cdn.yachtbroker.org/images/12387263-yachtbroker-48.jpg) (https://cdn.yachtbroker.org/images/12387263-yachtbroker-49.jpg)



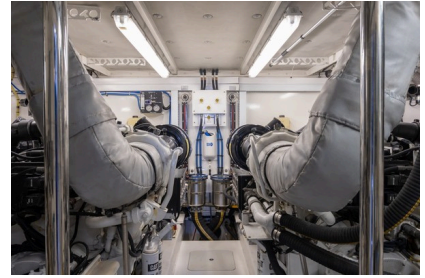
(https://cdn.yachtbroker.org/images/12387263-yachtbroker-51.jpg) (https://cdn.yachtbroker.org/images/12387263-yachtbroker-52.jpg)



(https://cdn.yachtbroker.org/images/12387263-yachtbroker-54.jpg) (https://cdn.yachtbroker.org/images/12387263-yachtbroker-55.jpg)



([https://cdn.yachtbroker.org/images/2787263/280406\\_57.jpg](https://cdn.yachtbroker.org/images/2787263/280406_57.jpg)) ([https://cdn.yachtbroker.org/images/2787263/280406\\_58.jpg](https://cdn.yachtbroker.org/images/2787263/280406_58.jpg))



([https://cdn.yachtbroker.org/images/2787263/280406\\_59.jpg](https://cdn.yachtbroker.org/images/2787263/280406_59.jpg)) ([https://cdn.yachtbroker.org/images/2787263/280406\\_60.jpg](https://cdn.yachtbroker.org/images/2787263/280406_60.jpg))



([https://cdn.yachtbroker.org/images/2787263/280406\\_61.jpg](https://cdn.yachtbroker.org/images/2787263/280406_61.jpg)) ([https://cdn.yachtbroker.org/images/2787263/280406\\_62.jpg](https://cdn.yachtbroker.org/images/2787263/280406_62.jpg))



([https://cdn.yachtbroker.org/images/2787263/280406\\_63.jpg](https://cdn.yachtbroker.org/images/2787263/280406_63.jpg)) ([https://cdn.yachtbroker.org/images/2787263/280406\\_64.jpg](https://cdn.yachtbroker.org/images/2787263/280406_64.jpg))

## Engines

### Engine 1

- Engine Make: Caterpillar
- Engine Model: C-32
- Engine Year: 2010
- Engine Type: Inboard
- Drive Type: Direct

### Engine 2

- Engine Make: Caterpillar
- Engine Model: C-32
- Engine Year: 2010
- Engine Type: Inboard
- Drive Type: Direct



- |                              |                                    |
|------------------------------|------------------------------------|
| • Power HP:<br>1550.00       | • Power HP:<br>1550.00             |
| • Fuel Type:<br>Diesel       | • Fuel Type:<br>Diesel             |
| • Hours: 1219.00             | • Hours: 1219.00                   |
| • Hours Date: 03-<br>15-2022 | • Hours Date: 03-<br>15-2022       |
| • Engine<br>Location: Port   | • Engine<br>Location:<br>Starboard |

## Generators

---

### Generator 1

- Generator Make:  
Cummins
- Generator Model: Onan
- Generator KW: 27.50

### Generator 2

- Generator Make:  
Cummins
- Generator Model: Onan
- Generator KW: 27.50

## Full Details

---

### Accommodations

The guest quarters of "Direct To" are masterfully laid out - yes, there's a reason Fairline is a perennial winner of various "Best Interior Design" awards. Most notable is the yacht's full beam master stateroom, located belowdecks aft. It features indulgently-large windows, tons of storage, a supremely-comfortable Queen berth, vanity desk, and oversized leather settee. Directly across from the bed, is a Samsung flat-screen television, with two high-end Bose speakers guaranteeing a true movie or sports-watching experience. The Master Head, with it's spa-like shower & tasteful accents is a "must see" while on board.

Leaving the master stateroom, one finds a twin bed guest cabins to port & starboard. Both are equipped with large hanging closets, flat screen TVs, and perfectly-positioned night lights. Just forward of the port guest cabin is the fantastically spacious day head (which also serves as the ensuite head for the port guest cabin). All the way forward is the surprisingly large ensuite VIP cabin,

which features not one, but two large hanging closets and plenty of storage for an extended trip.

All staterooms are marked by abundant natural light, and a continuation of the high-gloss walnut & sumptuous cream-colored fabric motif found throughout the rest of "Direct To". Moving from the main deck to belowdecks feels nothing if not seamless.

## Main Salon

Upon entering the main salon through the sturdy stainless steel-framed doors of this 74 Fairline, one is instantly struck by the elegant high-gloss walnut wood that covers nearly every surface of the yacht's interior. The condition of the wood - and everything else onboard - is far more suggestive of a 2022 Fairline model than of her actual vintage.

To port, one will find three leather-clad love seats of various sizes, with seating for six. The color of leather is reminiscent of a café au lait found at the finest of Parisian bistros. A matching coffee table/ottoman centers the lower part of the main salon. Directly across from the port-side seating is a retractable flat-screen television. On either side of the television, one finds a cabinet full of glassware with custom holders.

Forward to starboard is the yacht's dining area, where eight can be seated comfortably. While it's easy to imagine a formal dinner being served here, it's just as likely that this area will serve as a casual breakfast area. The table & seats are of the highest quality, while lacking in pretension (much like the rest of the yacht).

- Polk Audio Speakers (2)
- Large Side Windows with Wood Blinds
- High-Grade Wool Carpentry
- Upgraded Black Walnut Joinery
- Carpet Runners
- Samsung Flat Screen TV
- Bar with Bottle Storage
- Two Custom Glassware Cabinets
- Central Vacuum
- Satellite TV
- Port & Starboard Watertight Sea Door with Autolock
- Observation Area with Two Stainless Steel Bar Stools
- Dining Area with Large Freestanding Table & Eight Leather Dining Chairs

## Galley



- Two Sub Zero Refrigerator Drawers
- Two Sub Zero Freezer Drawers
- Island Bar with Tons of Storage (Including Custom Silverware Drawer)
- De Dietrich 4 Burner Induction Cooktop
- Teak Floors
- Black Granite Counters
- Whirlpool AccuBake Oven
- Whirlpool Microwave
- Double Stainless Steel Sink
- Broan Trash Compactor
- Miele Dishwasher

## Master Stateroom

- Mid Ship with Large Hull Windows
- Queen Walkaround Berth
- Oversized Walk-In Closet with Hanger & Four Drawers
- Dressing Table/Desk with Built-In Vanity
- Three-Person Settee, Clad in High-Grade Leather
- Samsung Flatscreen LCD TV
- Bose Receiver & Two Bose Speakers
- Wood-Paneled Shoe Storage Rack
- Tons of Drawers & Cabinets - More Than Enough Storage!

## Master Head

- His & Hers Porcelain Sinks from Deca
- Sauna-Like Shower with Multi-Directional Spray & Teak Flooring
- Two Large Mirrors & Multiple Cabinets
- High-End VacuFlush Marine Toilet
- Tecma Bidet
- Two Portholes

## VIP Stateroom

- Queen Walkaround Berth
- Two Large Hanging Lockers
- Fold-Out Vanity

- LAVA LCD TV with Surround Sound
- Too Many Cabinets to Count!
- Four Portholes (Plenty of Natural Light!)
- Ensuite Head with Fully-Enclosed Large Shower, Deca Porcelain Sink, and VacuFlush Toilet

## Port & Starboard Staterooms

- Twin Side By Side Berths
- Large Hanging Lockers
- LCD TV's with DVD Player Built In
- Shared Head with Large Shower

## Flybridge

- Wetbar with De Dietrich BBQ Grill, Isotherm Ice Maker, Isotherm Coolbox, and Refrigerator
- Teak Dining Table with U-Shaped Seating for 6 (Perfect al fresco Dining!)
- U-Shaped Seating to Port of Helm (Seating for 4)
- Triple Helm Seating
- Hi Lo Power Seatback Converts To Large Sunpad
- Bimini Top in Terrific Condition (New after all!)
- New Soft Goods
- Storage Under All Seating
- 2 x Clarion Speakers
- 2 x Poynting Omni-496 Dual-band Wi-Fi Omni-directional Antennas
- 2 x KVH Satellite Domes
- 2 x Shakespeare Galaxy 5225-XT VHF Marine Band Antennas

Broker Note: It would be literally impossible to have a larger, more entertainment-friendly flybridge on a 74 foot motor yacht!!!

## Deck

- Love Seat & Two Chairs on the Aft Deck
- Hatches to Crew Quarters & Aft Deck
- Wide Teak Flybridge Steps Leading from Aft Deck to Flybridge
- Hydraulic Lewmar Winches & High-Grade Stainless Steel Cleats (Aft, Port & Starboard)
- Washdown Station (Port Side)
- Cabinet with Fuel Shutoffs, Engine and Generators, Sea Fire Controls for Engine Room, Whale Hand Bilge Pump, Battery Isolator Switches (Starboard Side, Aft Deck)
- Boccioni Boccarella with Remote Control



- Bescorzi Passerelle with Remote Control
- Glendinning CableMaster Controls for Shore Power Cords (Starboard Side)
- Swim Platform with Stainless Steel Rails & Stanchions
- Hydraulic Door Providing Access from Aft Deck to Swim Platform
- Teak Side Decks Aft, Flexiteek Side Decks Forward
- Plenty of Storage for Lines, Cleaning Supplies, & Miscellaneous Items
- New Bow Sunpad With Twin Cooler Boxes Port and Starboard
- Hydraulic Lewmar Windlass & Hydraulic Winches
- Up and Down Foot Switches for Windlass
- Freshwater Washdown at Chain Locker
- Two Deck hatches to forward cabin
- Two Windshield Wipers & Washers
- Black mesh Cover Over Windshield
- Recessed Fender Lockers Port and Starboard in House Sides
- Overhead Deck Lights Port & Starboard
- Courtesy Blue LED Low Level Deck Lights

## Engine & Mechanical

- Caterpillar C-32 Engines with 1219 Hours (Both Engines - As of 3.15.22)
- 2 x Cummins Onan 27.5 Kw Generators
- Glendinning Cablemaster CM-7 Power Cable System
- Parker PMD-Chernitz Transmission
- CAT Direct Reading Gauge Panels
- SeaWater Pro Watermaker
- Xact Driftgate 2000 Voltage Regulator
- Garmin Video Camera
- ZF Marine Cruise Command Junction Box
- Dual Racor Fuel Filters for Each Engine with Vacuum Gauges
- Side-Power Hydraulic Bow & Stern Thrusters
- Hypro Marine Hydraulic Steering System
- Sea-Fire FM-200 Automatic Fire Extinguisher
- Raindrip Automatic Water Timer
- Mastervolt Combi Battery Charger & Inverter
- Freshwater Spigot with Hose
- Overhead Escape Hatch, Centerline Aft
- Engine Room Vent Fans, Port & Starboard
- Marine Air Chilled Water A/C Compressors
- Six Overhead Fluorescent Lights

## Inner Helm

## Upper Deck

- Dual Garmin GPSMap 8616 Multifunction Displays
- Open Array Garmin Radar - 72 NM Range
- Garmin GHC10 Autopilot
- Garmin GHS10 VHF Radio
- Garmin GMI 10 Multi-Data Display
- Garmin 115 VHF Radio
- VDO Analog Gauges
- Camara Feeds To Aft Deck & Engine Room
- Lewmar AA560 Chain Counter
- ACR Searchlight Control
- SidePower Bow & Stern Thruster
- Danforth GlobalBalance Compass
- Sea-Fire Fire Suppression System Monitor
- Fusion MS-UD650 Entertainment System Control

## Lower Helm

- Garmin GPSMap 8616 Multifunction Display
- Garmin 5008 GPS Display
- Open Array Garmin Radar
- Garmin GHC10 Autopilot
- Garmin GHS10 VHF Radio
- Garmin GMI10 Tri Data Display
- Lewmar AA560 Chain Counter
- Side-Power Bow & Stern Thruster Controls
- ZF Single Lever Controls
- Port & Starboard Caterpillar Display
- Sea-Fire Fire Suppression System Monitor
- ACR Searchlight Control
- Mastervolt Battery Monitor Display
- Danforth GlobalBalance Compass
- 220 Volt AC Distribution & 24 Volt DC Distribution Panels

## Crew Quarters

- Accessible from Aft Deck & Swim Platform
- Two Side-by-Side Berths
- Dinette with Sharp Grill 2 Convection Microwave
- Crew Head (Just Aft of Engine Room Access)



- Ariston Dryer & Splendide Washer
- Yet More Storage - Plenty of Cabinets!

## Seller Exclusions

- Personal Caterpillar Engine Tools
- Water Toy Floats
- Miscellaneous Personal Items

## Disclaimer

The company offers the details of this vessel in good faith but cannot guarantee or warrant the accuracy of this information nor warrant the condition of the vessel. A buyer should instruct his agents, or his surveyors, to investigate such details as the buyer desires validated. This vessel is offered subject to prior sale, price change or withdrawal without notice.

# CONTACT US /

For more information about this yacht please contact  
Will Snyder.  
We look forward to working with you!



## 26 North Yachts

2525 Marina Bay Drive West  
Suite 203A  
Fort Lauderdale FL 33312 USA  
Phone: 1-954-900-9988 (tel:1-954-900-9988)



## Will Snyder

Yacht Sales

520 West Ave  
Miami Beach FL 33139 USA  
Office: 1-954-900-9988 (tel:1-

Fax: 1-954-206-3075 (tel:1-954-206-3075)  
 Email: [info@26northyachts.com](mailto:info@26northyachts.com)  
 (mailto:info@26northyachts.com)  
 Website:  
<https://www.26northyachts.com>  
 (https://www.26northyachts.com)

We're the most admired boutique brokerage house in North America. We engage aggressive goals and implement innovative, yet disruptive marketing strategies that create a powerful platform for buyers and sellers of motoryachts in the 70' to 140' range.



(<https://www.facebook.com/26NorthYachts>)



(<https://twitter.com/26NorthYachts>)



(<https://www.youtube.com/user/26NorthYachts>)



(<https://www.linkedin.com/company/26-north-yachts>)



(<https://www.instagram.com/26northyachts>)

954-900-9988)  
 Fax: 1-954-206-3075 (tel:1-954-206-3075)  
 Cell: 1-954-235-3468 (tel:1-954-235-3468)  
 Email: [will@26northyachts.com](mailto:will@26northyachts.com)  
 (mailto:will@26northyachts.com)

William graduated with an MBA from The UCLA Anderson School of Management, and promptly fulfilled another lifelong goal by becoming a small business owner. The successful sale of that business enabled him to fully immerse himself in an industry that he had been following for years – yacht sales. After searching for the ideal firm with which to begin his career, William found it in 26 North Yachts, whose sophisticated approach to marketing, in particular, appealed to him. William now resides in Fort Lauderdale, and considers himself truly fortunate to live in one of the great yachting capitals of the world.



(<https://www.facebook.com/26North>)



(<https://twitter.com/26NorthYachts>)



(<https://www.youtube.com/user/26North>)



(<https://www.linkedin.com/company/26-north-yachts>)



(<https://www.instagram.com/26north>)

SCROLL TO TOP



© 2022 International Yacht Brokers Association (<https://iyba.yachts>) - Will Snyder, Active Member - Vessel  
ID: 2787263